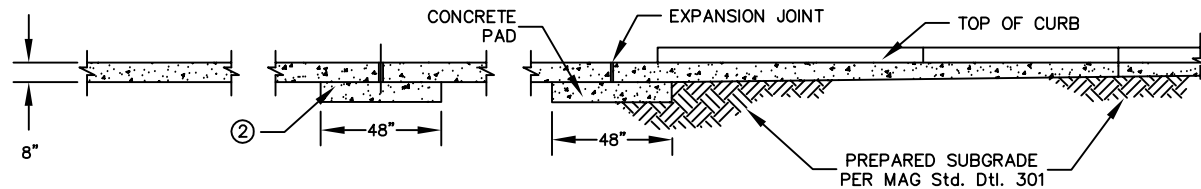
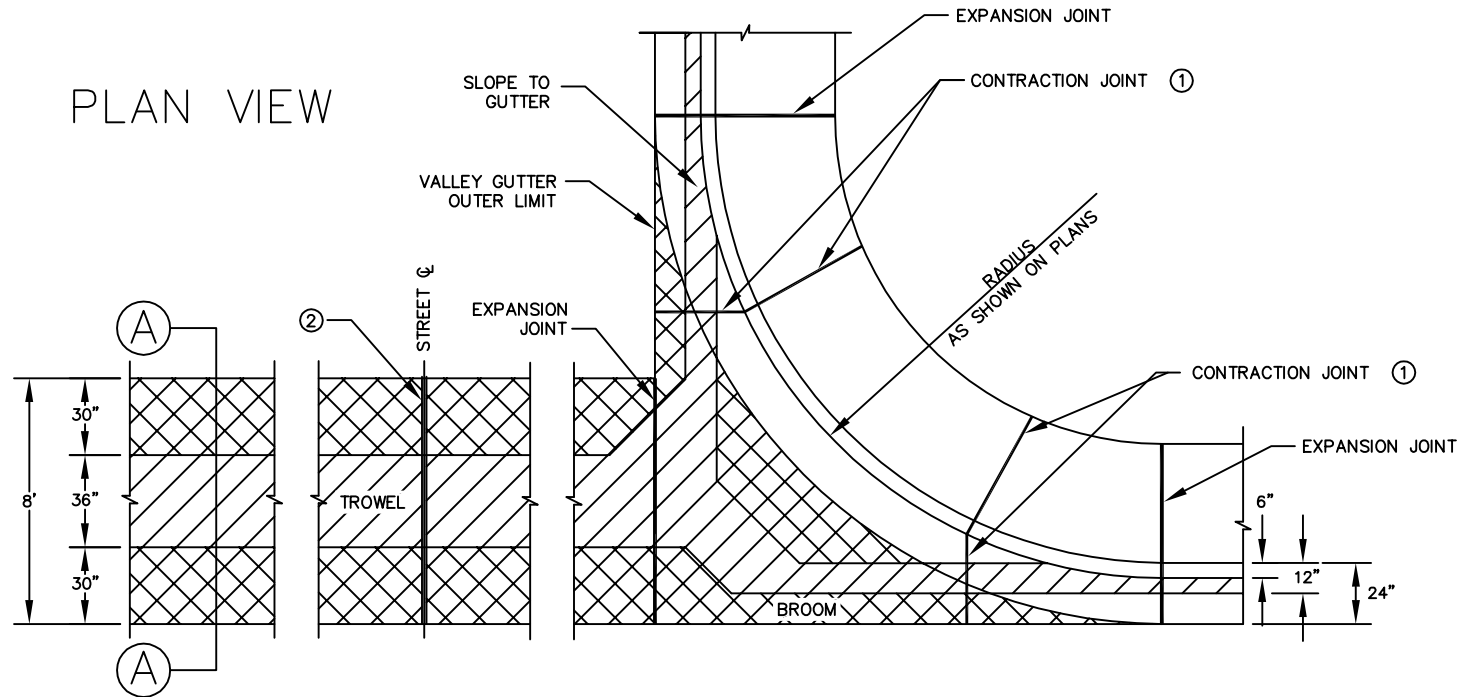
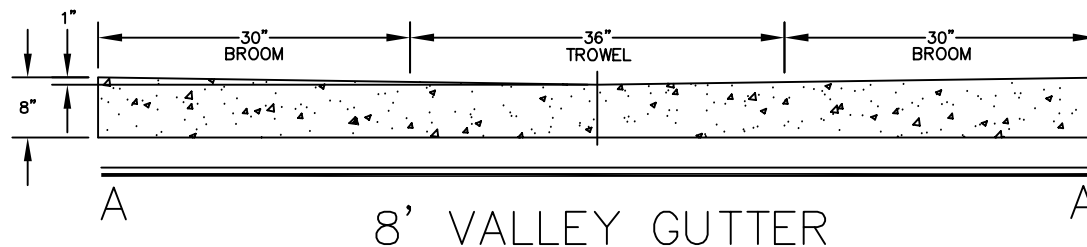


PLAN VIEW



PROFILE VIEW



NOTES

- 1 CONTRACTION JOINTS SHALL BE LOCATED AT APPROXIMATELY 1/3 DISTANCE FROM EXPANSION JOINTS (MATCH TO JOINT IN SIDEWALK).
- 2 A SEPARATE CONCRETE PAD IS REQUIRED WHEN THE VALLEY GUTTER IS POURED HALF AT A TIME.
- 3 EXPANSION JOINTS SHALL BE CONSTRUCTED AS PER MAG STD. SECT. 340.
- 4 EITHER CONSTRUCTION JOINT OR CONTRACTION JOINT IS REQUIRED AT CENTERLINE OF STREET.
- 5 ALL CONCRETE TO BE CLASS 'A' UNLESS OTHERWISE APPROVED (PER MAG STD. SECT. 725).