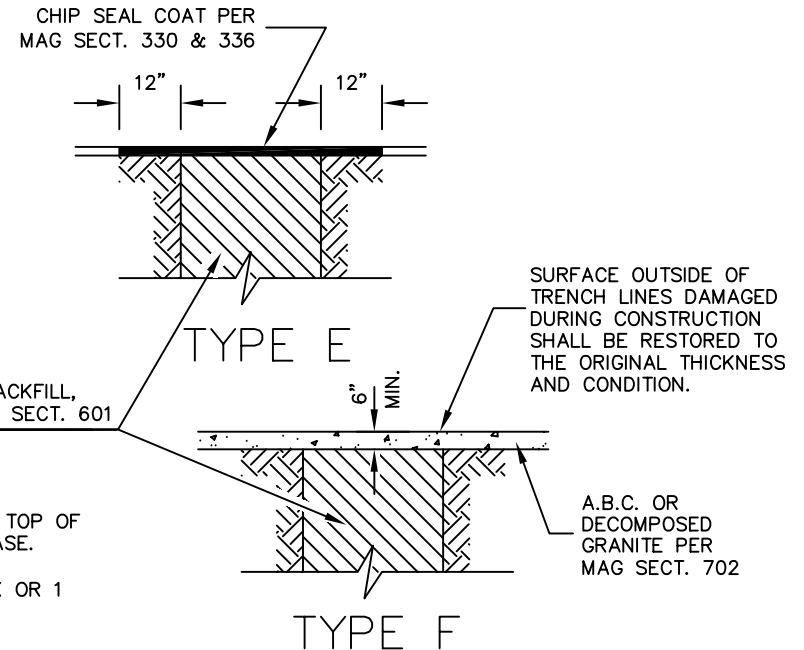
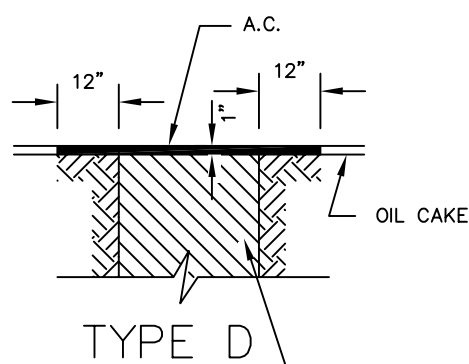
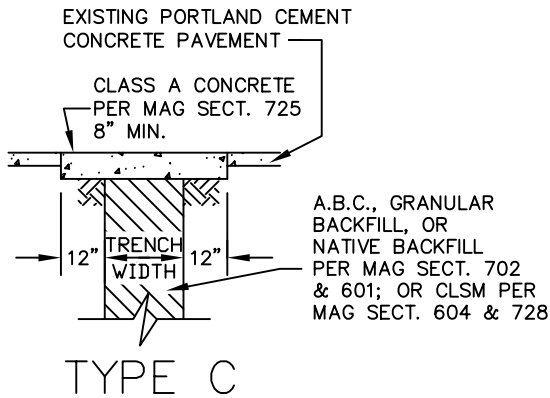
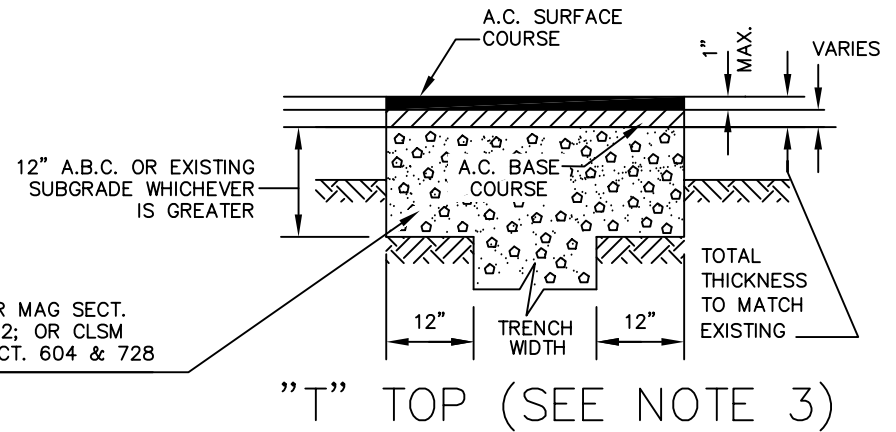
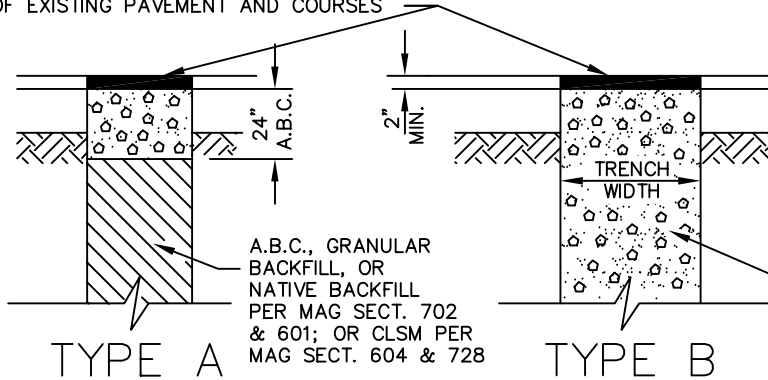


A.C. PAVEMENT MATCH GRADATION & THICKNESS OF EXISTING PAVEMENT AND COURSES



NOTES

1. BEDDING PER MAG SECTION 601.
2. ASPHALT CONCRETE SHALL BE IN ACCORDANCE WITH THE REQUIREMENTS OF MAG SECT. 321.
3. 12" LIP IS REQUIRED ON THE SIDES OF A TRENCH THAT ARE NOT PARALLEL TO THE CENTER LINE OF THE STREET.
4. TYPES D & E REQUIRE 9" OF A.B.C. AT TOP OF TRENCH WHEN THERE IS AN EXISTING BASE.
5. THE TYPE OF CLSM SHALL BE 1/2 SACK OR 1 SACK AS SPECIFIED BY THE SPECIAL PROVISIONS, PLANS, OR THE ENGINEER.